

LUA LINE



A Publication of the Hawaii Water Environment Association (HWEA)

Volume 20 Number 1

www.hwea.org

Spring 2008

PRESIDENT'S MESSAGE

By John Katahira, 2007-2008 HWEA President

As I write this, I sit amongst 500 wastewater professionals at HWEA's 30th Annual Conference. Note that I say wastewater *professionals*: operators, scientists, equipment manufacturers/vendors, planners, engineers, contractors, and utility owners. More or less, Hawaii's wastewater community. Where else in Hawaii can someone learn cutting edge technologies and innovative management techniques for improving our water quality and make life-long friendships at the same time? It's truly an incredible experience.

The HWEA board of director's term is March to February, so my time is officially up. If there's one thing I've learned this past year as president, it's that Hawaii is loaded with outstanding wastewater professionals who are selflessly committed to "protecting and enhancing Hawaii's water environment" as the HWEA mission eloquently states. As an industry, we may not be the best of promoting our achievements, but that doesn't mean positive stories don't exist. Perhaps it's the local culture...don't toot your own horn, dad always said.

I'll give it a try.

Public Education Committee

An active and effective public education program is essential to HWEA because it delivers our mission to people beyond the wastewater community. Lead by Steve Parabolicoli (County of Maui) and Lori "Kaj" Morikami (Department of Health), this active committee has participated in several public events, including the annual "Mad About Science" event at Bishop Museum, where they promote our wastewater industry by enlightening our keiki and parents alike.

Young Professionals Committee

With Lyuba Puzakova (HDR|Hawaii Pacific Engineers) and Tim Lum Yee (HDR|Hawaii Pacific Engineers) spearheading this committee, the biggest "problem" with YP events is crowd control. Their impactful events have received raved reviews by all who attend. There' no wind-up necessary with this group... they just go!

Newsletter

If you are reading this article, then you received our current edition of the *Lua Line*. Many thanks to Alex Rafalovich (M&E Pacific) for stepping up to revive our newsletter after a one-year absence.

30th Annual Conference (February 19-21)

The annual conference committee was lead by Wynn Miyamoto (Fukunaga & Associates) & Dawn Barsana (CH2M Hill). The entire committee (23 of the "funniest" people who you would ever want to meet) worked tirelessly to bring our water and wastewater community a conference worthy of its 30th annual namesake. They did a terrific job. Thanks to all for a job well done!



John Katahira

Banning Together When it Counts

You may have heard or read about the EPA's tentative decision to deny the City and County of Honolulu's 301(h) waiver. In effect, this decision could require upgrades to full secondary treatment at the Honouliuli and Sand Island WWTPs. The estimated cost to the City is \$1.2 billion...that's billion, with a "B".

After nearly 30 years of scientific research and water quality data collection, HWEA members agree that the waiver should be extended. It's true that full secondary treatment is generally considered to improve effluent quality; however, it may not be the best solution for this situation where we have favorable deep ocean outfalls and significant dilution factors. And let's not forget about other negative environment impacts related to EPA's tentative decision: increased solids generation; and increased greenhouse gas production created by more energy consumption and the biological treatment process itself. Isn't

In This Issue of the *Lua Line*

Volume 20, Number 1

pg

President's Message	1-2
The Editors Desk	2
Young Professionals Committee	3-5
Membership Committee	6
Government Affairs Committee	7
Public Education Committee	8
WEF Tidbits	8-11
2007-2008 HWEA Board of Directors and Special Committee Chairs Roster	12-13

avoiding another Ala Wai force main tragedy more important than marginal, if any, improvement to water quality miles offshore?

Personally, I am humbled by HWEA experts on this matter and realize how important it is for this organization to create opportunities to share ideas and make meaningful decisions... together. HWEA will continue its commitment to educate Hawaii residents based on sound science and opinions free of political bias.

HWEA is a dynamic organization based on dedicated wastewater professionals. It has been my privilege to serve this organization and I look forward to more good things from our future leaders, including Lori Kahikina-Moniz, who will be our new HWEA president by the time you read this.

All the best,

John H. Katahira

From The Editors Desk....

After a 1-year hiatus, the Lua-Line continues its mission of informing all of us in Hawaii's Water Industry about the issues that matter to us most. There is a lot of good stuff happening at HWEA. **Get Involved!**, and help make Hawaii's water profession one of the nations best! I am thankful to John and the rest of the HWEA Board who allowed me to serve in the capacity of editor. And what a wonderful job all of our contributing authors did to make the Lua-Line resurrection a reality. Drop me a quick e-mail with any comments you have on this newsletter as we are always looking for ways to make it better.

Aloha,

Alex

Efficient Resourceful Sustainable

Balanced solutions that make sense.

Wastewater Pumping & Treatment Facility Design
Conventional/Trenchless Infrastructure Rehabilitation
Water Reclamation and Reuse
Water Supply and Management
Asset Management/Business Case Evaluation



BROWN AND
CALDWELL
Environmental Engineers & Consultants

Honolulu Maui • brownandcaldwell.com

2008 COUNTY JOBS

For vacancy announcements for the **City and County of Honolulu**, please visit <http://www.co.honolulu.hi.us/hr/eps.htm#new>

For vacancy announcement for the **County of Hawaii**, please visit http://www.hawaii-county.com/civil_serv/civ_serv.htm

or vacancy announcements for the **County of Kauai**, please visit <http://www.kauai.gov/Default.aspx?tabid=198>

For vacancy announcements for the **County of Maui**, please visit <http://www.co.maui.hi.us/departments/Personnel/employmentOpportunities.php>

YOUNG PROFESSIONALS COMMITTEE

Lyuba Puzakova, Co-Chair

Ph. 440-4540, Fax 538-0445

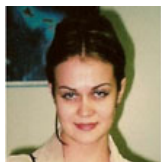
Tim Lum Yee, Co-Chair

Ph. 440-4540, Fax 538-0445

Email:

Lyuba.Puzakova@hdrinc.com

Timothy.LumYee@hdrinc.com



Lyuba Puzakova



Tim Lum Yee

A NEW GENERATION OF PROFESSIONALS A Recap of the Special Past Events and a Look in to the Future

What’s in a name? “Professionalism.” To some, it means service; whereas to others, it means leadership. But to the students and young professionals of the Hawaii Water Environment Association (HWEA) and American Water Works Association (AWWA), it simply describes a goal in which we all aim to reach.

As the new generation of water and wastewater professionals enters the workforce, we learn to recognize that the road to becoming successful is through a shared knowledge gleaned by our teachers, our workplace, our peers, and professional organizations such as AWWA and HWEA.

The Students and Young Professionals (SYP) Committee was formed in 2005 to foster these goals through various programs and events. The past year, SYP hosted a variety of outreach programs, tours and field trips, socials, and service and educational events, some of which are summarized below:

Tours and Field Trips

Tours and field trips included visiting Hawaiian Waters Adventure Park in Kapolei for a behind-the-scenes tour of the facilities. For this trip, attendees were given a tour of the Park’s pump/filter building



and the chlorine room. One of the more interesting facts was that the waves of the Hurricane Bay are generated by differentiating the pressure to the water supply. Good to know!

Another trip included a bus tour to one of Oahu’s primary watersheds, sponsored by the Ala Wai Watershed Association and the Honolulu Board of Water Supply. The tour featured the Nuuanu Reservoir, Moanalua Stream, Halawa Xeriscape Garden, the Pearl Harbor Aquifer, and a view of the watershed from Keehi Lagoon. Seeing first hand where Oahu’s freshwater comes from reminded us of how valuable having an adequate water supply is, and how we can work towards protecting our water supply for generations to come.

Lokahi Giving Program Service Event

During the holiday season, members of SYP and the American Society of Civil Engineers (ASCE)



Younger Members Forum (YMF) assisted the annual Lokahi Giving Program to help those who are less fortunate during the holiday season. On an early Saturday morning, volunteers arrived bright and eager at the warehouse to take inventory and organize the donations that were received. In addition to helping organize new Christmas gift donations, Lokahi supervisor Lynn Waiamau showed us that one person's



surplus can be another person's treasure, so no gift or monetary donation is too small.

"Passport to Success" Technical Sessions

In an effort to provide lecturers that will be of interest to young people, SYP co-hosted two technical sessions about financial management and professional liability, respectively, also known as the "Passport to Success" Technical Sessions.

Speaker, Grant Hashiba, financial advisor of the Financial Network Investment Corporation, discussed ways in which young people can better manage their finances, purchase a home, and/or prepare for retirement. Mr. Hashiba underlined the specifics about 401(k)s, IRAs, and Roth IRAs, explained how they differ, and elaborated on the advantages and disadvantages of each plan. He also talked about stocks and mutual funds, helping SYPs begin an action plan towards financial stability.

Chuck McKay, of Rosenberg and McKay, spoke about professional liability, but more specifically about what is entailed when drawings and reports are stamped. Mr. McKay went over the Hawaii Administrative Rules (HAR) pertaining to licensed engineers



and architects in a very interesting way, and helped young engineers to better understand the responsibilities and commitments to the profession and to the welfare of public.

SYP could not have hosted these events and activities without the financial and moral support by AWWA and HWEA. In particular we'd like to thank Elson Gushiken, Susan Uyesugi, Audrey Yokota, and John Katahira.

As we begin 2008, we look forward to an increase in involvement and more opportunities for discovery and exploration. We also encourage suggestions and feedback, so please feel free to contact us at timo-thy.lumyee@hdrinc.com and lyuba.puzakova@hdrinc.com.

oceanit
Innovation through engineering & scientific excellence

INNOVATIVE ENGINEERING SOLUTIONS

Stormwater Management, Wastewater Collection System Design, Water Quality Studies, Total Maximum Daily Load Studies, Ecosystem Restoration, Permits and Environmental Compliance Documents

WWW.OCEANIT.COM

828 Fort Street Mall, Suite 600 • Honolulu, HI 96813
Ph: (808) 531-3017 • Offices on Oahu, Maui, and Kauai

SERVICE AND MENTORSHIP

As a new, young, or potential member of an organization, the possibility of getting involved can sometimes be a daunting mission. In the case of HWEA, one might wonder “What is this organization about?” or “Do I know enough to provide any new insight?” But Young Professionals (YPs), in fact, do have much to offer in terms of service and volunteer opportunities. In addition, experienced members have a lot of knowledge and wisdom to share with younger members.

This year at the 2008 HWEA Conference, both service and mentorship were key themes as YPs assisted with the registration desk, helped collect lunch tickets, and got involved by asking questions at the exhibitor booths and technical sessions. The conference also hosted its first ever YP Lounge, the new site of the annual Mentorship Program.

Turnout at the Mentorship Program was excellent as mentors and mentees showed up to discuss current projects and issues, career goals, and the water and wastewater industry. The event was a great opportunity to meet new people in the profession with similar specialties and interests.

Lounge attendees also enjoyed refreshments (cookies and juice) sponsored by The Limtiaco Consulting Group and HDR|Hawaii Pacific Engineers, Inc.

Another new addition to the conference was the YP Scavenger Hunt activity intended to share interesting facts about HWEA



and its parent organization WEF. Some of the questions were:

- Who’s John Katahira? (2007-2008 HWEA President)
- How often is the *WEF Highlights* published? (10 times a year)
- How would you translate “Collaborating to Sustain Our Water Environment” in Hawaiian? (E laulima kakou e holo mau ka wai)

We hope that these offerings have given something fun and informative for HWEA members to enjoy. We are constantly looking for new ways to invite students and young professions and experienced professionals more opportunities to become active with organization, so please feel free contact us at timothy.lumyee@hdrinc.com or lyuba.puzakova@hdrinc.com.

The Students and Young Professionals Committee sends out a big Mahalo to all the volunteers, mentorship attendees, exhibitors, speakers, conference attendees, and guests for supporting us and for your continued enthusiasm and guidance.



MEMBERSHIP COMMITTEE

Alma Takahashi, Committee Chair

Ph. 1-808-270-7420, Fax 1-808-270-7425

Yvonne Miyasato, Vice-Chair

Ph. 1-808-270-7419, Fax 1-808-270-7425

E-mail: membership@hwea.org



Alma Takahashi



Yvonne Miyasato

HWEA Membership Summary as of January, 2008

Category	Members
Active Membership	245
Corporate Membership	6
Half-Life Active/Retired	13
Life Members	8
Operations Division	194
Retired Membership	2
Student Membership	3
Young Professional Membership	9
Total	478

CHANGE YOUR ADDRESS ONLINE

Changes to your mailing/e-mail address and phone/fax number can be done through the WEF website at www.wef.org:

- ◆ Enter membership ID - use full membership ID of 8 characters (if it's a 7 digit ID, please add a leading zero (0) at the beginning)
- ◆ Enter password - if never logged in before, it will be the first 15 characters of the last name, or the first 15 characters of the company name for corporate members
- ◆ There will be the following choices:
 - Membership & Careers
 - Membership Information
 - Join WEF
 - Join online
 - My membership info
 - Change address
 - Submit
- ◆ Click on "Change address" and update the information. Then submit the record

Or, you could inform the Membership Committee of any changes so you can continue to receive local and national publications and information.

JOINING HWEA OR RENEWING MEMBERSHIP

Applying for, or renewing your HWEA membership can also be done online through the WEF or HWEA website:

- ◆ Through the WEF website (www.wef.org) – click on the following:
 - Membership & Careers
 - Membership Information
 - Join WEF
 - Join online
 - Select membership category and follow the instructions,
 - Download a PDF version to printout and mail, or Select Membership Renewal
- ◆ Through the HWEA website (www.hwea.org) – Go to the membership page by clicking on the navigation button on the left side of the page. Clicking on the Applying/Renewing for Membership section will take you to the WEF website

Government Affairs Committee

Robin Matsunaga

Ph. 521-5361, Fax 538-7819

Email: rmatsunaga@beltcollins.com

Walter Billingsley

Ph. 521-5361, Fax 538-7819

Email: wbillingsley@beltcollins.com

EPA Tentative Decision to Deny Sand Island WWTP Waiver

The U.S. Environmental Protection Agency Region IX (EPA) made a tentative decision on December 7, 2007 to deny the City and County of Honolulu’s Section 301(h) “waiver” permit application to discharge less than secondary-treated wastewater at the Sand Island WWTP. The basis of EPA’s decision is that the existing discharge does not meet water quality standards for chlordane, dieldrin, ammonia and the whole effluent toxicity (WET) test.

It is not known whether an upgrade of the Sand Island WWTP to secondary treatment will eliminate the preceding water quality exceedances. Effluent from the Sand Island WWTP did not have any adverse effects on the water flea species commonly used for WET tests throughout the nation. The WET test failed using the *vana* (sea urchin) spawning protocol, but the protocol for this specific species has been demonstrated to be somewhat inconsistent.

The general findings of the 1996 Mamala Bay study found that primary treatment with ultraviolet disinfection at the Sand Island WWTP was sufficient to meet water quality standards.


The City’s preliminary estimate for upgrading the Sand Island WWTP is \$1.2 billion. This will compound the ongoing \$0.7 billion sewer collection system repair and the estimated \$0.4 billion Honouliuli WWTP system upgrade. Increased staffing requirements and energy consumption will increase operation expenses as well.

This decision will impact all of our members and every citizen on Oahu. We urge all of our members and interested citizens to review these issues firsthand and express your opinions. The HWEA Communications Committee has kindly added links on the HWEA home page (www.hwea.org) for the tentative decisions for the preced-

ing WWTPs and submitting comments. We urge Oahu residents to attend the public hearing on March 12, 2008 at Washington Middle School in McCully to listen to the public and contribute. Those that are unable to attend can send their comments to the attention of Ms. Sara Roser at R9-301h-Commnts@epa.gov. The original date for receiving written comments was February 29, 2008. As of the publication date, EPA has not announced whether it will extend this date beyond the date of the public hearing.

“The significant problems we have cannot be solved at the same level of thinking with which we created them.”

Albert Einstein



THE LIMTIACO CONSULTING GROUP
CIVIL ENGINEERING AND ENVIRONMENTAL CONSULTANTS

www.tlghawaii.com



BILLS ENGINEERING INC.
Civil/Environmental Engineering

1124 Fort Street Mall, Suite 200
Honolulu, Hawaii 96813-2715
Telephone: 808.792.2022
Facsimile: 808.792.2033
General Email: info@BillsEngineering.com



Fairway Villas - Waikoloa



Ka'elepulu Reconstructed Wetlands

PUBLIC EDUCATION COMMITTEE

Steve Parabolicoli, Chair

Ph. 270-7420, Fax 270-7425

Lori "Kaj" Morikami, Vice Chair

Ph. 586-4290, Fax 586-4300

E-mail: public-education@hwea.org

The Public Education Committee was fairly busy over the past year. I would like to recognize our active members who contributed their valuable time towards our committee's various endeavors. These members are Lori "Kaj" Morakami, Linda Hijirida, Roy Abe, Kai Andrade, Kyle Yukumoto, Clayton Brown, Greg Perry, Ann Sokei and Ken Windram.

We restocked our educational and HWEA promotional items and took our show on the road by participating in Bishop Museum's annual "Mad about Science Festival". At this event we had a few activities for kids to partake in including a rubber ducky game and a microscope that showcased live wastewater microbes (the good guys). We also handed out brochures, water conservation stickers, activity booklets and yes, even HWEA rubber ducks. The ducks were a big hit with the kids and adults. We plan on participating in this event again this coming year.

Others notable accomplishments were:

- ◆ Assisting the Student Activities Committee with judging water related science projects for the Stockholm Junior Water Prize competition.
- ◆ The issuance of a press release reminding Hawaii residents on the proper disposal method for fats, oils and grease.
- ◆ The drafting of an informational HWEA brochure.
- ◆ Conducting class room presentations and wastewater reclamation facility tours for local schools.

Also, Mahalo to Greg Perry who coordinated the issuance of a \$1000 grant from his company, Environ Services & Training Center, LLC to HWEA. This money was earmarked for future HWEA educational activities.

If you are interested in joining the Public Education Committee, please give me a call at 270-7426.

WEF TIDBITS

- ◆ PWO News
- ◆ WEFTEC Delegate Highlights
- ◆ WEFTEC Judging Experience
- ◆ Collection System Workshop Summary
- ◆ Treasurers Report

PWO News January 2008

The First Annual Co-ed Beach Volleyball Tournament was held in November at the Kalama Park in Kihei. The teams and spectators were treated to a beautiful Maui day full of sunshine and fellowship. The Tournament Director, who formulated the brackets, enforced tournament rules, and coordinated the officiating crew, was Scottie Zucco from Aloha Volleyball. Stewart Stant coordinated the tournament including lunch provided by Lulu's Restaurant, dinner at Lulu's, court and spectator area preparation, tournament T-shirts, and live music to entertain the crowd.

Six teams entered the tournament. The County of Maui Wastewater Reclamation Division entered four teams, one from their Administration office, Kihei Wastewater Treatment Plant, Electrical Section, and Operations Section. Aqua Engineer's Schofield Treatment Plant entered two teams. The Operations Section team consisting of Michael Ratte, Colette Guillermo, Virgil Viernes, Stewart Stant, and Bradley Pierce won the championship. Trophies were awarded to the champions and all of the participants.

There was fun for all who came to play or cheer on their favorite team. There was even an inflatable water slide

Plain, adorned or concealed

the beauty of a DYK tank is in the structure

- Best return on investment
- Minimal maintenance
- Efficient design

DYK
INCORPORATED

Prestressed. Maximum Efficiency. Minimal Maintenance.

www.dyk.com 1-800-227-8181

for the kids, both big and small, to enjoy. A big Mahalo goes to Scottie, Stewart and everyone who helped for making the tournament a great success.

The Second Annual Co-ed Beach Volleyball Tournament will be held again on Maui. Details will be announced in the coming months.

The date of the next Operator Certification examination is February 14, 2008. The deadline for applications for the certification examination was November 30, 2007. Hopefully, all of you who had planned to take and studied for the exam submitted your applications before the deadline. Check the Statewide Operator Training Center calendar for a Refresher Course on your island.

The Operations Challenge was held during the Hawaii Water Environment Association's Annual Conference on February 20 & 21, 2008 at the Hawaii Convention Center. Congratulations to the MAUI RECLAIMERS. They won the competition and will represent Hawaii at WEFTEC 08 in Chicago.



The winning team is MAUI RECLAIMERS. Team members are: (l-r) William Mohlman, Joseph Jares, Deb Schulman, and Team Captain Anita Fernandez.

2007 WEFTEC Delegate Highlights

Not too much to report for this addition. As our new delegate I attended the 2007 WEFTEC House of Representatives meeting. It primarily consisted of taking care of past business and installing a new President (see below for a brief bio). In addition, the organization is re-looking at upcoming goals and initiatives.

New WEF President Adam Zabinski

At the 2007 annual WEFTEC conference in San Diego, Adam Zabinski began his one year term as President of WEF. After serving as First Deputy Commissioner of the Westchester County Department of Environmental Facilities and working for the department for twenty eight years, he recently stepped down to devote full time to WEF activities.

A WEF member since 1976, he served on the Board of Trustees from 2003-2005, is chair of the Membership Committee, Vice-Chair of the Committee Leadership Council Management Focus Area, and a member of the Utility Management and Long Range Planning Committees. In addition, Adam has been an active member of the New York Water Environment Association (NYWEA) serving on the Board of Directors and as Vice President, President-Elect, and President.

One current WEF initiative I would like to mention are the efforts to involve young professionals. A link to a very good newsletter and the webpage is provided below.

WEF Young Professionals newsletter/webpage. The WEF YP committee has created a webpage and newsletter (YP Connections). The link to the newsletter is:
<http://www.wef.org/NR/rdonlyres/E88528A6-9F13-45FC-8C46-1ADF1B594B43/0/YPConnectionsOct07.pdf>

By: Peter Ono,
 2007 WEFTEC Delegate

Wastewater Solutions of Hawaii

Amy Hagen-Cowell

POST OFFICE BOX 2414
 KEALAKEKUA, HI 96750

T: (808) 987-3430
 F: (808) 323-3616
 E: amywhx@hawaiiantel.net



Orencia Systems®
 Incorporated

Changing the Way the World Does Wastewater®

www.orencia.com

“My Experience being a judge at WEFTEC”

It’s been a wonderful experience being a judge at WEFTEC, San Diego. I met a lot of people from different committees, plus I made many friends from all over the country. We shared ideas and techniques on how we can train our teams effectively. I had a chance to see different techniques of each team be executed with ease and proficiency. I enjoyed the dinner invitations and all the “freebies” that vendors were giving out. My goal now is

to implement whatever I learned at WEFTEC at the HWEA Conference here in Hawaii; to make the conference more professional and challenging for all the competitors. I am looking forward to being a judge again at this years conference in Chicago.

By: Merlie Cabauatan



Wastewater Testing Equipment



Technicians Hard At Work



The Judges



Good Job Team

4th BIENNIAL COLLECTION SYSTEM WORKSHOP SUMMARY REPORT

FROM: Scott Kunioka, Collection System Workshop Co-Chair
SUBJECT: Summary Report for Collection System Workshop

The 4th Biennial Collection System Workshop drew 125 participants to the Pacific Beach Hotel on November 7 & 8, 2007. Conference participants included personnel from varying occupations such as the operation and maintenance, government enforcement, design consultants and product sales. With the majority of the participants coming from Oahu, they also came from the neighbor islands and across the nation. There were a total of 24 speakers that included representatives from the City & County of Honolulu, County of Maui, County of Hawaii, County of Kauai, Private Consulting Firms, and Product Vendors.

The workshop had many topics including the use of varying types of pipe materials, collection system master planning, and collection system assessment and analysis techniques. Some of the workshop highlights included exciting and interesting presentations from the City's Collection System Maintenance Staff and innovative and new construction technology from various speakers. The workshop concluded with an informative session with representatives from each of the Counties presenting summaries of their collection systems facilities. After their presentations, they discussed how each county addresses common practices and problems that occur in operating and maintaining their collection system facilities.

**TREASURER'S REPORT
 As of 2/7/08 (Cash Basis)**

Account	Balance
ASSETS	
Cash and Bank Accounts	
Bank of Hawaii	\$ 9,214.59
Conf. Checking	\$ 135,002.65
Merrill Lynch	\$ 15,626.00
HWEA Cash	\$ 50.00
TOTAL Cash and Bank Accounts	\$ 159,893.24
Other Assets	
Customer Invoices	\$ 0.00
TOTAL Other Assets	\$ 0.00
TOTAL ASSETS	\$ 159,893.24
LIABILITIES & EQUITY	
LIABILITIES	\$ 0.00
EQUITY	\$ 159,893.24
TOTAL LIABILITIES & EQUITY	\$ 159,893.24

MARK A. GOODRWE
 President

866 Iwilei Road, Unit 214
 Honolulu, Hawaii 96817

Phone (808) 545.4890
 Fax (808) 545.4908
 Cell (808) 292.6811

Email mark@usihawaii.biz
 Web http://usihawaii.biz



The Proven Solution for Manhole Rehabilitation

Sauereisen is the easiest single-source solution for rehabilitation systems of deteriorated municipal infrastructures. No other manufacturer offers a complete family of materials with proven results.

SewerGard No. 210

- Resistant to MIC attack
- Prohibits water infiltration
- Trowel or spray applied

Underlayment No. F-120

- Restores structural integrity
- Easy to install - topcoat in 5 hours, reducing downtime

InstaPlug No. F-180

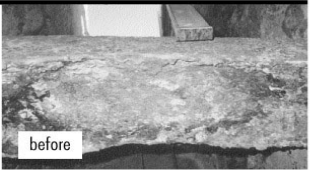
- Water plug material
- Stops active hydrostatic leaks
- Extremely fast setting

H20Prof No. F-190


- Seals against infiltration
- Economical
- Safe and easy to apply

Hydroactive Polyurethane Grout No. F-370

- Expands in the presence of moisture
- Stops leaks and fills voids in cracked or honeycombed concrete
- Fast setting



before



after

Rehabilitated with SewerGard No. 210

SAUERISEN

Contact our knowledgeable technical staff to learn more about our economical rehabilitative products. If you want proven results, we have you covered.

J.A. CRAWFORD CO.
 562-698-0901 • 925-449-6161 ... since 1967

2007-2008 HWEA BOARD OF DIRECTORS AND SPECIALTY COMMITTEE CHAIRS ROSTER

President*

John Katahira

The Limtiaco Consulting Group
650 Iwilei Road, Ste 208
Honolulu, HI 96817
Ph. 596-7790, Fax 596-7361
john@tlcghawaii.com

Vice-President*

Lori Kahikina-Moniz

City & County of Honolulu
Dept of Environmental Services
1000 Uluohia Street, Suite 308
Kapolei, HI 96707
Ph. 527-6692, Fax 531-8007
lkahikina@honolulu.gov

Secretary-Treasurer*

Mark Goodrowe

Underground Services, Inc.
866 Iwilei Road, Unit 214
Honolulu, HI 96817
Ph. 545-4890, Fax 545-4908
mark@usihawaii.biz

Past President/Nominating Chair*

June Nakamura

Engineering Solutions, Inc.
98-1268 Kaahumanu Street, Ste C-7
Pearl City, Hawaii 96782
Ph. 488-0477, Fax 488-3776
june@engrsol.com

Delegate (National Director)*

Peter Ono

Brown & Caldwell
1099 Alakea Street, Ste 2400
Honolulu, HI 96813
Ph. 523-8499, Fax 533-0226
pono@brwncald.com

PWO Representative*

Theodore Leong

County of Maui
Wastewater Reclamation Division
480 Welakahao Road
Kihei, HI 96753
Ph. 879-6169, Fax 879-6369
Theodore.leong@co.maui.hi.us

Collection Systems Chair

Jon Nishimura

Fukunaga & Associates, Inc.
1388 Kapiolani Blvd., 2nd floor
Honolulu, Hawaii 96814
Ph. 944-1821, Fax 946-9339
jnishimura@fainc.org

Collection Systems Vice-Chair

Tina Ono

City & County of Honolulu DDC
650 South King St, 14th Floor
Honolulu, HI 96813
Ph. 523-4067, Fax 523-4642
tono@honolulu.gov

Conference Co-Chair

Wynn Miyamoto

Fukunaga @ Associates, Inc.
1388 Kapiolani Blvd., 2nd Floor
Honolulu, HI 96814
Ph. 944-1821, Fax 946-9339
wmiyamoto@fainc.org

Conference Co-Chair

Dawn Barsana

CH2M Hill
1132 Bishop Street, Ste 1100
Honolulu, HI 96813
Ph. 440-0254, Fax 538-8254
dbarsana@ch2m.com

Board Advisory/Constitution & Bylaws Co-Chair

Lee Mansfield

Hawaii-American Water Company
PO Box 25010
Honolulu, Hawaii 96825
Ph. 394-1285, Fax 395-5023
lmansfie@amwater.com

Board Advisory/Constitution & Bylaws Co-Chair

Kristie Ching

City & County of Honolulu DDC
650 South King St, 14th Floor
Honolulu, HI 96813
Ph. 527-5158, Fax 523-4642
kching1@honolulu.gov

Government Affairs Chair

Robin Matsunaga

Belt Collins Hawaii
2135 N King Street Suite 200
Honolulu, Hawaii 96819
Ph. 521-5361, Fax 538-7819
rmatsunaga@beltcollins.com

Government Affairs Vice-Chair

Walter Billingsley

Belt Collins Hawaii
2135 N King Street Suite 200
Honolulu, Hawaii 96819
Ph. 521-5361, Fax 538-7819
wbillingsley@beltcollins.com

Laboratory Chair

Merlita Empeno

City & County of Honolulu
Honouliuli WWTP
91-1000 Geiger Road
Ewa Beach, HI 96706
Ph. 681-3138 x201, Fax 681-5459
mempeno@honolulu.gov

Laboratory Co-Chair

Robert Rychlinski

County of Maui
Wastewater Reclamation Division
480 Welakahao Road
Kihei, HI 96753
Ph. 879-6109 x215, Fax 879-6369
robert.rychlinski@co.maui.hi.us

Membership Chair

Alma Takahashi

County of Maui
Wastewater Reclamation Division
2200 Main Street, Suite 610
Wailuku, Hawaii 96793
Ph. 270-7420, Fax 270-7425
alma.takahashi@co.maui.hi.us

Membership Vice-Chair

Yvonne Miyasato

County of Maui
Wastewater Reclamation Division

* Indicates Executive Board Member

2007-2008 HWEA BOARD OF DIRECTORS AND SPECIALTY COMMITTEE CHAIRS ROSTER (cont.)

2200 Main Street, Suite 610
 Wailuku, Hawaii 96793
Ph. 270-7419, Fax 270-7425
 yvonne.miyasato@co.maui.hi.us

Pretreatment/On-Site Treatment Chair

Dwight Nakao
 State Department of Transportation
 1 Kahului Airport Road
 Kahului, HI 96732
Ph. 872-3407– Fax 872-3829
 wwpretreat@yahoo.com

Pretreatment/On-Site Treatment Vice-Chair

Edith Eldeen
Ph. 692-5375, Fax 550-6945
 eeldeen@honolulu.gov

Public Education Chair

Steve Parabolicoli
 County of Maui
 Wastewater Reclamation Division
 2200 Main Street, Suite 610
 Wailuku, Hawaii 96793
Ph. 270-7420, Fax 270-7425
 steve.parabolicoli@co.maui.hi.us

Public Education Vice-Chair

Lori “Kaj” Morikami
 Hawaii State Department of Health
 919 Ala Moana Blvd, 3rd Floor
 Honolulu, HI 96814-4920
Ph. 586-4290, Fax 586-4300
 lori.morikami@doh.hawaii.gov

Research Chair

Roger Babcock, Jr.
 University of Hawaii, Manoa
 College of Engineering
 Dept. of Civil Engineering
 2450 Dole Street, Holmes Hall 383
 Honolulu, Hawaii 96822
Ph. 956-7298, Fax 956-5014
 rbabcock@hawaii.edu

Student Activities Chair

Kyle Yukumoto
 R.M. Towill Corporation
 420 Waiakamilo Road, Suite 411
 Honolulu, Hawaii 96817
Ph. 842-1133, Fax 842-1937
 kyley@rmtowill.com

Water Quality Chair

Wendy McLain
 SSFM International, Inc
 501 Sumner St, Suite 620
 Honolulu, HI 96817
Ph. 531-1308, Fax 521-7348
 wmclain@ssfm.com

Water Quality Co-Chair

Jay Stone
 Oceanit
 828 Fort Street Mall, Suite 600
 Honolulu, HI 96813
Ph. 531-3017, Fax 531-3177
 jstone@oceanit.com

Water Reuse Chair

Eassie Miller
 Aqua Engineers
 3560 Koloa Road
 Kalaheo, Hawaii 96741
Ph. 332-7381, Fax 332-7596
 eassie@aquaengineers.com

Water Reuse Co-Chair

Mike Street
 Environet, Inc.
 2850 Pa'a Street, Suite 212
 Honolulu, Hawaii 96819
 Ph: 833-2225, Fax: 833-2231
 mstreet@environethawaii.com

Communications Chair

Mark Goodrowe
 Underground Services, Inc.
 866 Iwilei Road, Unit 215
 Honolulu, HI 96817
Ph. 545-4890, Fax 545-4908
 mark@usihawaii.biz

Communications Vice Chair

John Farmer
Ph. 488-0477, Fax 488-3776
 engineering@engrsol.com

Young Professionals Co-Chair

Lyuba Puzakova
 HDR/Hawaii Pacific Engineers, Inc
 1132 Bishop Street, Suite 1003
 Honolulu, HI 96813
Ph. 440-4540, Fax 538-0445
 Lyuba.Puzakova@hdrinc.com

Young Professionals Co-Chair

Tim Lum Yee
 HDR/Hawaii Pacific Engineers, Inc
 1132 Bishop Street, Suite 1003
 Honolulu, HI 96813
Ph. 440-4545, Fax 538-0445
 Timothy.LumYee@hdrinc.com

Biosolids/Co-Generation Co-Chair

Greg Arakaki
 Kennedy/Jenks Consultants
 98-1268 Kaahumanu Street, Ste C7
 Pearl City, HI 96782
Ph. 485-2223, Fax 650-1255
 gregarakaki@kennedyjenks.com

Biosolids/Co-Generation Co-Chair

Gayle Takasaki
 State Dept of Health, Wastewater
 Branch
 919 Ala Moana Blvd, room 309
 Honolulu, HI 96814
Ph. 586-4294, Fax 586-4300
 Gayle.takasaki@doh.hawaii.gov

Updated November 9, 2007

M&E Pacific, Inc.

METCALF & EDDY | AECOM

Serving Hawai'i, the Pacific and Asia since 1959...

Civil Engineering and Design
Environmental Engineering
Water Treatment and Supply
Wastewater Collection and Treatment
Hazardous Waste Remediation
Storm Water Management
Construction Management
Surveying

www.m-e.aecom.com

Welcome back, HWEA Lua Line!



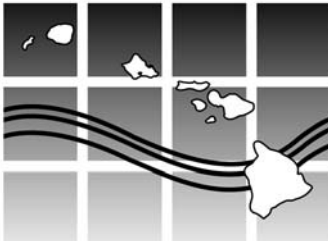
HONOLULU
841 Bishop St, Ste 1900
Honolulu, HI 96813
Phone 808 521.3051 FAX 808 524.0246

HILO
100 Pauahi St, Ste 207
Hilo, HI 96720
Phone 808 961.2776 FAX 808 935.5934

WAILUKU
1885 Main St, Ste 405
Wailuku, HI 96793

Top
Sand Island WWTP Phase 1 Expansion,
Honolulu, O'ahu –
Primary clarifier sludge pump room and
existing odor control tanks for the headworks

Bottom
Beachwalk WWPS Force Main Emergency
Bypass, Waikiki, O'ahu –
Construction vault at Kūhiō Ave/Kai'olu St
and 11-ton microtunneling machine



HAWAII WATER ENVIRONMENT
ASSOCIATION • SINCE 1962
P.O. Box 2422 • Honolulu, Hawai'i 96804
www.hwea.org • e-mail: info@hwea.org

CHANGE SERVICE REQUESTED

**Presorted
Standard
US Postage Paid
Honolulu, Hawaii
Permit No. 169**